

Booking Information and Costs



SVI Guiding Members:

\$30.00 Deposit
McKevitt Lodge: \$4.50pp
per day/night
Outdoor Campsites:
\$3.00pp per day/night

Other Guiding Members:

\$50.00 Deposit
McKevitt Lodge: \$6.00pp per day/night
Outdoor Campsites: \$4.50pp per day/night

Outside Organizations

\$90.00 Deposit
McKevitt Lodge: \$9.00 pp per day/night
Outdoor Campsites: \$6.00 pp per day/night

Crests: \$1.50 each

Bookings

To contact our booking person
please phone Southern Vancouver
Island Guide House

Phone: 250-383-1712
E-mail: svgirlguides@uniserve.com
www.svgirlguides.bc.ca/camping.htm



Pristine Beauty

Outdoor Skills



A place to explore

See you at Check-In!



Girl Guides
of Canada
Guides
du Canada

Bookings

Book early to ensure you
get the date you want!

Phone: 250-383-1712
E-mail: svgirlguides@uniserve.com



Kingswood Camp



Come Camp With Us!

- ♣ McKevitt Lodge: 24 plus staff
- ♣ 2 outdoor sites: 18 and 36 plus staff
- ♣ Beautiful wilderness setting
- ♣ Close to hiking trails, a lake for swimming and much more!

Bookings


Tel: 250-383-1712 OR
svgirlguides@uniserve.com
www.svgirlguides.bc.ca/camping.htm



McKevitt Lodge



Tucked into the woods above Elk Lake, this charming lodge is ideal as a residential camp for any level of Guiding or any group of up to 24 (plus staff).

Wheelchair accessible. 

Lodge Features:

- ♣ 24 bunk beds, plus separate room for staff
- ♣ Large, fully equipped kitchen
- ♣ Central room equipped with tables & chairs, and fireplace ideal for any activity
- ♣ Heat and Hot Water
- ♣ Large open area in front for active games including a nearby fire ring

Order crests from onsite caretakers \$1.50 each



Bill Reith Site



Lower Campsite

The Bill Reith Site is our largest site, accommodating **36 plus staff**. It features a wide open area for activities, a flattened tenting area, and a cook shelter with wood stove

Campsite Features:

- ♣ Cook shelter with wood stove
- ♣ Potable, running water
- ♣ Large fire ring as well as individual rings for small group cooking
- ♣ 4 outdoor latrines and liquid disposal unit for waste water



Freeman King Site

Upper Campsite

Surrounded by majestic Arbutus and Garry Oak, this site is a great place for a smaller group. Lovely at any time, it becomes filled with wildflowers in Spring. This site is also conveniently located next to the camp Chapel & the Kory Marshall Trail.

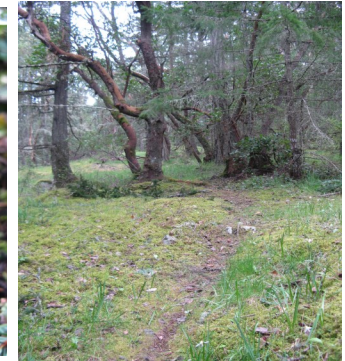


Campsite Features:

- ♣ Tent sites in trees suited for 18 plus staff
- ♣ Potable water tap by shelter
- ♣ Large and small fire rings
- ♣ 2 outdoor latrines
- ♣ Near chapel and Kory Marshall Nature Trail



Arbutus Site



Wilderness Campsite

Located off of the Kory Marshall Nature Trail which starts near the chapel, this is a primitive site. All campers must come fully contained, carry in their own water and practice 'Leave no trace camping'. **No fires. No pit toilets available.**

Other Amenities

- ♣ Onsite caretakers for emergencies
- ♣ Equipment to borrow including:
 - ♣ -cooking ware (patrol or group)
 - ♣ -buckets & fire grills for outdoor cooking
 - ♣ -Canvas tents
- ♣ -easy access to Elk/Beaver Lakes
- ♣ -maps of site & Elk Lake
- ♣ -beautiful chapel for ceremonies
- ♣ -close to the Royal Astronomical Observatory
- ♣ -crests for purchase from caretakers
- ♣ -Geocaches hidden on site with instructions



Girl Guides of Canada
Guides du Canada